



Monday 25<sup>th</sup> January 2021

Maths:

WALT: make two-digit amounts using coins.

If you can, visit: <https://www.bbc.co.uk/bitesize/articles/z6wbf82> and revise coin values. After that, there are three activities to work through. If you can't access the website, complete the activity below:

Draw one of each coin that we have (a circle with the amount written on is fine. I've done the first one for you):



Can you make the given amounts with the least amount of coins? Draw the coins to show what is needed.

Make 45p

Make 98p

Make 52p

Make £1.75

Monday 25<sup>th</sup> January 2021

SPaG:

We use apostrophes to show possession (Bob's toy = the toy belongs to Bob) and for omission (don't = do not). Not all words ending with /s/ need an apostrophe, only when something belongs to someone/thing.

Visit: <https://www.bbc.co.uk/bitesize/topics/zvwwxnb/articles/zx9ydxs> and work through. If you can't access the website, complete the activity below:

Fill in the missing apostrophes to show possession.

1. The childs ball was lost.
2. Sams cat was black and white.
3. All of the childrens pencils needed sharpening.
4. Bobs pens had fallen on the floor.
5. Mrs Ms car is red.

Phonics:

Don't forget to visit *Phonics Play* website to access all the games and activities. The log in details are on the website.

This week we are revising /ow/ and /oe/ saying /oa/. Read the words on the bookmark, making sure you pronounce them correctly. Look at the two tricky words (common exception words). Remember they're tricky because we can't sound them out. Check what it is they say with your adult. Can you write a sentence for each of the tricky words?

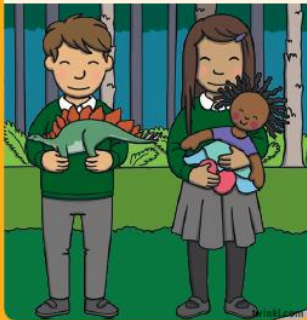
---

---

---

---

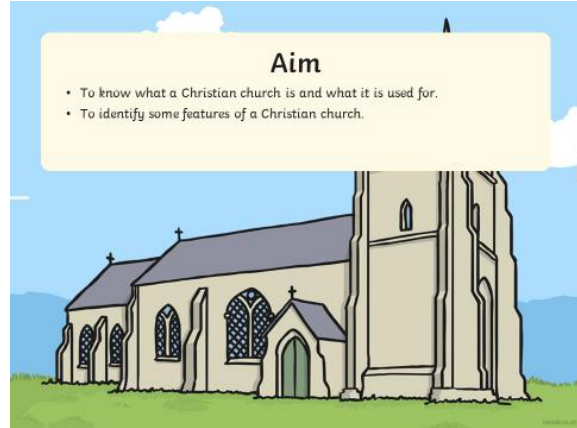
Focus Sound	
ow saying /oa/ oe saying /oa/	
low	slow
window	own
toe	hoe
doe	goes
Common Exception Words	
thought through	



Monday 25<sup>th</sup> January 2021

## Religious Education:

Last week we thought about our own special place. This week we are going to learn a little bit about Christian churches. Look through the slides below and then complete the activity.



## What is a church?

Tell your friend something about these 2 buildings. How would you describe them?

What is similar about them?

What is different?

## Special Places

Here are two different Christian churches:

**St Paul's Cathedral** was first built over 1000 years ago! It was built from wood at first, but unfortunately it burnt down and had to be built again. This time it was built in stone. Many famous people have been buried there, including Admiral Nelson.

This Methodist Chapel is in Leeds, West Yorkshire. It is a simple stone building.

Compare the two churches. How are they similar or different?

Photo courtesy of The Crown Estate/Alamy.com - signed under Creative Commons license - unaltered

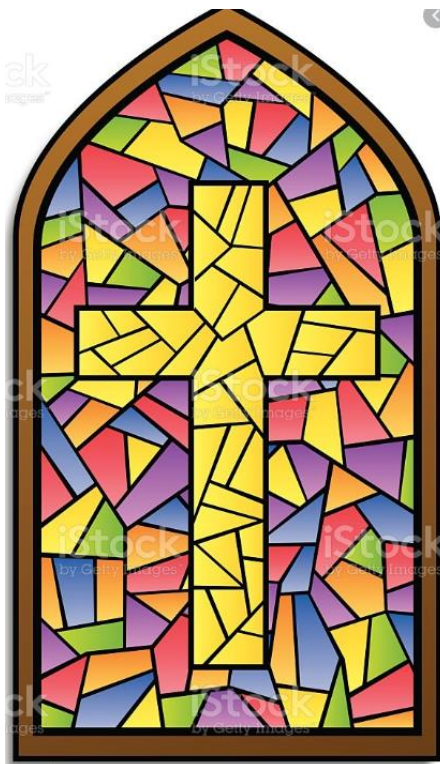
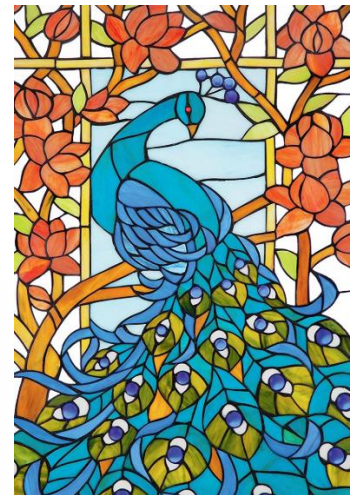




# Why Do People Go to Church?

- To pray – People like to pray in God's house in peace and quiet.
- To sing – Singing hymns is an important part of going to church for some people.
- To worship – People like to worship God in church where there are no other distractions.
- To learn – People visit church to learn about the stories in the Bible.
- To get married – People get married in a church as it is a holy act.
- To get baptised – A ceremony to welcome a baby or member to the family of the church.
- For a funeral – A funeral service is held to remember someone who has died.
- To meet friends – Church is often a social place to make friends and be part of a group.

Think about the stained glass windows that are found in churches. Can you design your own stained glass window? What would you include in your design? What colours would you choose? Here are some ideas to have a look at:



Monday 25<sup>th</sup> January 2021 RE

WALT: recognise a Christian church and why it is special. To identify the features of a Christian church.

