

Daily Plan
Friday 22nd January

Friday 22nd January 2021

Early Work	Maths 5 a day	Practise your weekly spellings list. (Nouns ending in the suffix -tion.) Use the pyramid method that I have shown you in school. You have 10 minutes. Go!
English	Today is spelling test day so practise your spellings using the practise sheet provided. Then get an adult to test you and mark together to see how you did. I am sure you did well!	Complete the Spring Term SPaG Mat. You may need to go on the BBC Bitesize website to refresh your memory on pronouns, fronted adverbial or subordinate clauses. <u>What is a pronoun? - BBC Bitesize</u> <u>What is a fronted adverbial? - BBC Bitesize</u> <u>What are subordinating conjunctions? - BBC Bitesize</u>
Maths	Log in to Topmarks maths and play 'Mental Maths Train'. Choose a division game of your choice at your level. <u>Mental Maths Train - A Four Operations Game</u> (topmarks.co.uk)	Multiplication Grid Test. Time yourself for 10 minutes and record your time and score in the Homework section of this weeks page of your Reading Record.
Art	Research some ideas on Pinterest for a snowy background to a picture. You could use bits that you can find around the house to make a collage e.g cotton wool or balls, tin foil, rice.	Think about the description of the Winter Wonderland of Narnia that we have been reading. We will complete this piece next session.
Spelling/Reading	information adoration sensation preparation education location exaggeration concentration imagination organisation	Read for 15 mins with an adult or older sibling and record it in your daily reading record. This could be a book from school or home or a comic. Don't forget to record it in your reading record and get a grown up to sign it. Excellent! You should have reached your goal of reading a minimum of 4 times a week.

Name: _____

Primary 5-a-day

Bronze



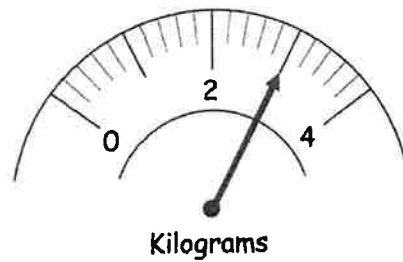
22nd January

$32 \div 4$

$202 + 8$

Megan is buying carrots.

What amount of carrots does she buy?



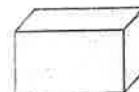
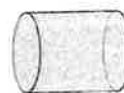
Sinead buys an ice cream for £1.30
She pays with a £2 coin.

How much change should Sinead receive?



Two shapes have **more than** 6 edges

Circle them.



THE LION, THE WITCH, AND THE WARDROBE



CHAPTER 11

Word Study



Part 1: Figurative and literary devices (1 mark each)

A **simile** is a comparison of two unlike things using the terms "like" or "as".

An **onomatopoeia** is a word that depicts the sound something makes.

An **idiom** is an expression which cannot be determined from the meanings of the actual words.

Personification is when human qualities are given to non-human objects.

A **hyperbole** is an exaggeration or overstatement.

Identify the underlined and italicized words or phrases as either *simile* (3), *onomatopoeia* (4), *idiom* (1), *personification* (3), or *hyperbole* (1).

1. "...he came bounding like an enormous dog to the side of the sledge."

2. "...immediately he shot away into the snow and darkness, as quickly as a horse can gallop." _____
3. "And as they went on, hour after hour, it did come to seem like a dream."

4. "And still they went on and on, with no sound but the everlasting swish of the snow and the creaking of the reindeer's harness." _____
5. "At that moment one of the young squirrels lost its head completely."

6. "A strange, sweet, rustling, chattering noise ..." _____
7. "And his heart gave a great leap ... when he realized that the frost was over."

8. "And much nearer there was a drip-drip-drip from the branches of all the trees."

9. "You will hardly be able to imagine what a relief those green patches were after the endless white." _____
10. "Every moment more and more of the trees shook off their robes of snow."

11. "A light breeze sprang up which scattered drops of moisture from the swaying branches ..." _____
12. "A bee buzzed across their path." _____

THE LION, THE WITCH, AND THE WARDROBE



Reading Comprehension



Part 1: Circle the correct answer. (1 mark each)

1. What did Edmund ask the White Witch to give him?
 - a. warm clothes
 - b. a warm drink
 - c. Turkish Delight
 - d. a hot meal
2. What did the White Witch give Edmund to eat at her castle?
 - a. stale bread and water
 - b. gruel
 - c. goat's milk and Turkish Delight
 - d. apples and cheese
3. What did the White Witch order Maugrim do?
 - a. Kill Edmund.
 - b. Go to the Beaver's dam and kill everyone they find.
 - c. Go to Mr. Tumnus's cave and have him arrested.
 - d. Find Aslan and destroy him.
4. What did the woodland animals tell the Witch about where they got the feast?
 - a. They got it from Mr. Tumnus's cave.
 - b. They got it from the Beavers, and the children that were with them.
 - c. They got it from Father Christmas.
 - d. They got it from the Dwarf.
5. What did the White Witch do to the woodland animals?
 - a. She tricked them into betraying the children.
 - b. She turned the animal party to stone.
 - c. She laughed at them and continued on her quest to find the children.
 - d. She had the wolves destroy the animal party.
6. What did Edmund notice about the White Witch's sledge and the forest as they travelled to catch his brother and sisters?
 - a. It was slowing down because the snow was melting.
 - b. The reindeer's harnesses were wearing through.
 - c. The right runner was coming loose until it could hardly move.
 - d. The dwarf was taking them in the wrong direction.

THE LION, THE WITCH, AND THE WARDROBE

Part 2: Answer the following questions in FULL SENTENCES.

7. Why did the Witch respond the way she did when the Dwarf mentioned Aslan? (3 marks)

8. Why do you think Edmund shouted out for the Witch not to harm the animals? (2 marks)

9. What changes does Edmund notice around him as he is walking with the Dwarf and the White Witch? (3 marks)



