

Monday 8th February 2021

English

WALT: write sentences as questions.

We have learnt a lot about Samuel Pepys over the last few weeks. Visit:

<https://www.youtube.com/watch?app=desktop&feature=share&v=VarSSAwiiuU> to see a short video about him.

Think about what you would like to ask him if you could go back in time. When we write questions we have to use question words to start our questions: when, why, what, who, how and where and a question mark to finish them (?). Perhaps you could ask him why he buried his cheese and wine!

Write a letter to Samuel Pepys, asking him questions about what he saw and how he felt during the Great Fire.

Old Heath Primary School,
Old Heath Road,
Old Heath,
Colchester,
CO2 8DD

Date: _____

Dear _____,

Yours sincerely, _____

Monday 8th February 2021

Maths

WALT: use sharing to divide.

Last week we used grouping to divide by working out how many groups we could make out of a given number ($10 \div 5 = 2$ because we can make 2 groups of 5). Today we are going to be using sharing to divide. We have done this before and some of you preferred this way. So, instead of finding how many groups we can make, we share the first number out, one at a time, between how many the second number is. For example: $10 \div 5$ means we've got 10 altogether, and we need to share it out 1 at a time into 5s. Visit: <https://www.ictgames.com/mobilePage/doggyDivision/index.html> and play the game sharing the bones between the dogs. Then have a go at the problems below. You might need something to count with like marbles or cubes or use the space at the bottom of this sheet to work out your answers.

$15 \div 5 =$	$12 \div 3 =$
$16 \div 4 =$	$10 \div 2 =$
$8 \div 4 =$	$20 \div 10 =$
$21 \div 7 =$	$30 \div 10 =$

Monday 8th February 2021

SPaG:

This week we are going to be thinking about plurals and whether to add s or es to the root word.

Choose the correct plural noun to fit in the spaces.

1. Milly took all the _____ out of the box and put them away.

hat hats hates

2. Tom's _____ started falling out when he was six.

tooth tooths teeth

3. My grandpa loves to eat fresh _____.

tomatos tomatoes tomatoes

4. Some people say that cats have nine _____.

lives lifes lifi

Phonics:

Don't forget to visit *Phonics Play* website to access all the games and activities. The log in details are on the website.

This week we are revising /ph/ saying /f/.

Read the words on the bookmark, making sure you pronounce them correctly.

Look at the two tricky words (common exception words). Remember they're tricky because we can't sound them out. Check what it is they say with your adult. Can you write a sentence for each of the tricky words?

Focus Sounds

ph saying /f/

phone	dolphin
elephant	alphabet
photo	microphone
graph	orphan

Common
Exception Words

because different

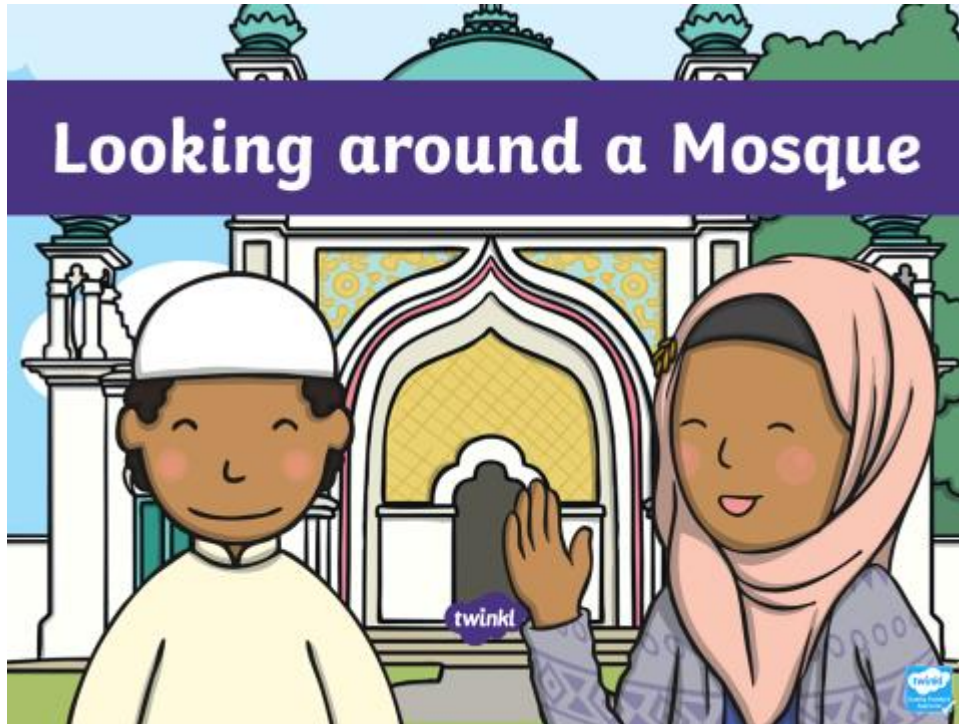


Monday 8th February 2021

RE

WALT: know some facts about mosques.

We have been thinking about places that are important to Christian people. Today we are going to think about a place that is important to Muslim people, the mosque. Watch the short film about a visit to a mosque: <https://www.youtube.com/watch?v=GWi7pIHfJl8> . Then look through the information below:



Starter Activity

What do all of these buildings have in common?

Three photographs of different mosques. The top one shows a mosque with a large dome and minarets. The middle one shows a mosque with a large dome and minarets. The bottom one shows a mosque with a large dome and minarets.

Photos courtesy of: suah, wachantantad, Shirley (@flickr.com), gretchen ailer, creative commons license - @flickr

What Is It like inside a Muslim Mosque?

Three photographs showing the interior of a mosque. The top one shows a prayer area with rows of wooden benches. The middle one shows a large, ornate dome with intricate patterns. The bottom one shows a close-up of a large, ornate dome with intricate patterns.

Photos courtesy of: ashrafrazvi, Jimmy Jockhye - Editor HCE, One Magazine (@flickr.com), grantclunior, creative commons license - @flickr

Why Do People Go to a Mosque?

Muslims go to mosque to pray and services are held every day. The most important weekly service is held on a Friday.

Many Muslims believe that praying with other Muslims can make you feel part of a family.

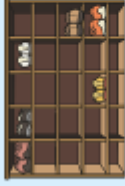
Inside a mosque, there is often a school where people can learn the Arabic language. This is the language that the Muslim holy book, the Qur'an, is written in.

Festivals, weddings and funerals can take place in mosques too.

twinkl.co.uk

Important Features of a Mosque

Shoe Rack



A place to leave your shoes before entering.

Prayer Mats



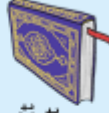
Mosques either have carpet with individual prayer mats or Muslims take their own prayer mat to worship upon.



Wash Room

Muslims must wash before entering the main hall.

Qur'an



The Muslim holy book which is the word of God. It is treated with great respect and placed on a special wooden stand to be read.

twinkl.co.uk

Showing Respect



Take off your shoes before entering.

Wash feet, hands, nose, mouth, throat, ears, arms (up to elbow) before entering.



Women and men worship separately.

Important Features of a Mosque

Tasbeeh Beads



Beads hanging around the mosque to help worshippers think about Allah.

Mihrab

An alcove in the wall shows the direction the worshippers need to face. This is the direction of Mecca in Saudi Arabia, the most sacred Muslim place in the world.



Minaret

Most mosques have at least one minaret which is a tall thin tower. A man stands at the top and calls Muslims to prayer.



twinkl.co.uk

Monday 8th February 2021

RE

WALT: know some facts about mosques.

Once you've looked at the information, design your own prayer mat using patterns including squares, triangles and circles. Don't draw people or animals as Muslim people do not use those images inside a mosque.

