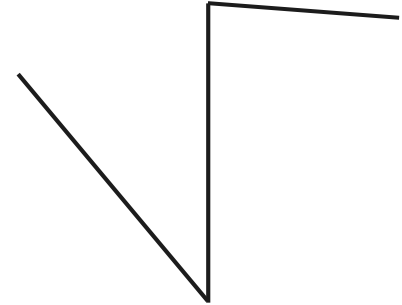
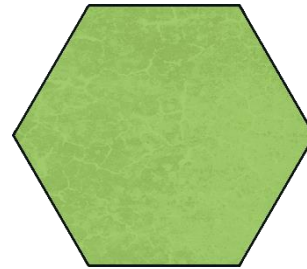
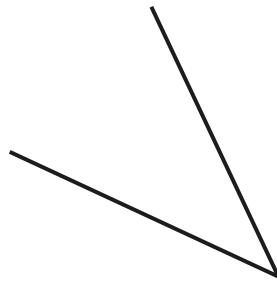


National Curriculum Objective(s)

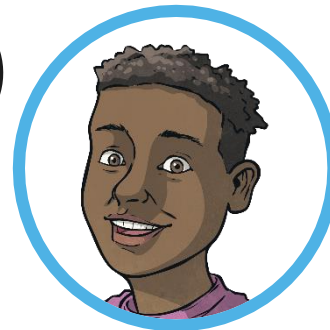
- Identify right angles, recognise that two right angles make a half-turn, three make three quarters of a turn and four a complete turn; identify whether angles are greater than or less than a right angle.



An angle is made when two straight lines meet.

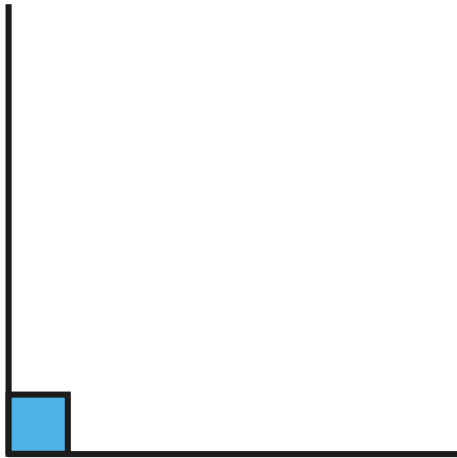


Each of these pictures shows one or more angles.

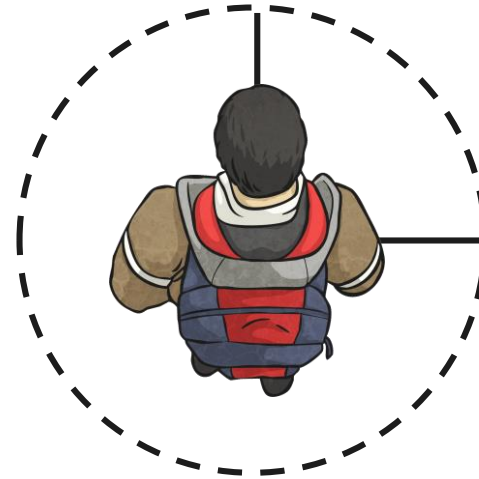




A right angle is made when two lines meet like this:



A quarter turn looks like this:



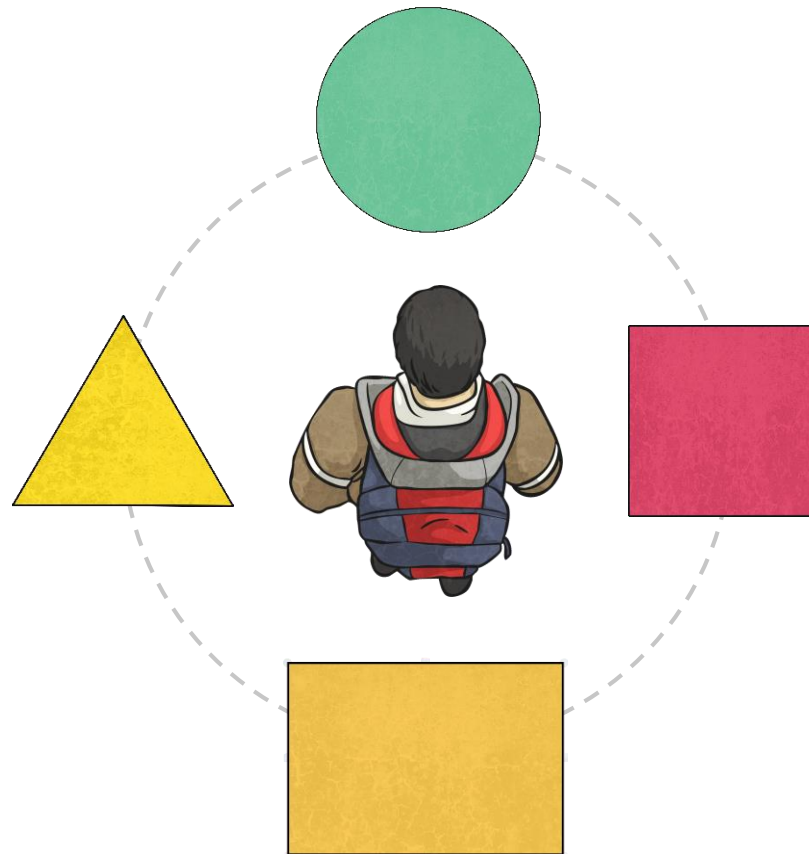
The size of a right angle is 90° .

When something makes a quarter turn, it turns 90° .



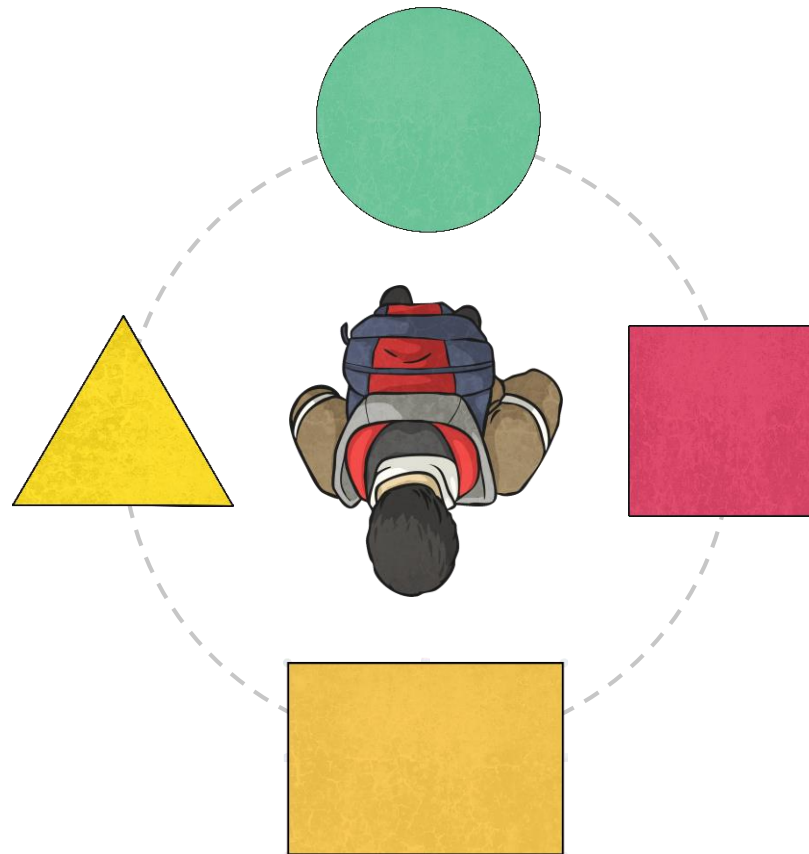


The child is facing the **circle**. If they make a quarter turn clockwise, which shape will they be facing?





The child is facing the **rectangle**. If they make a three-quarter turn anticlockwise, which shape will they be facing?





The child makes a quarter turn clockwise to face the circle.
Is there another way he could have turned to end up in the same position?

