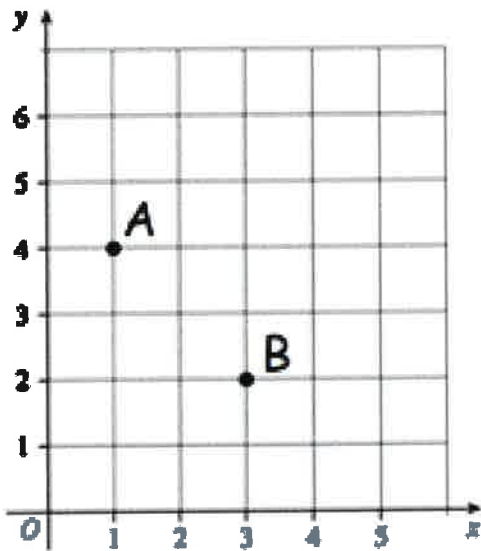




6th July

$$808 - 125$$

$$\frac{5}{9} - \frac{1}{9}$$



Write down the coordinates of point A

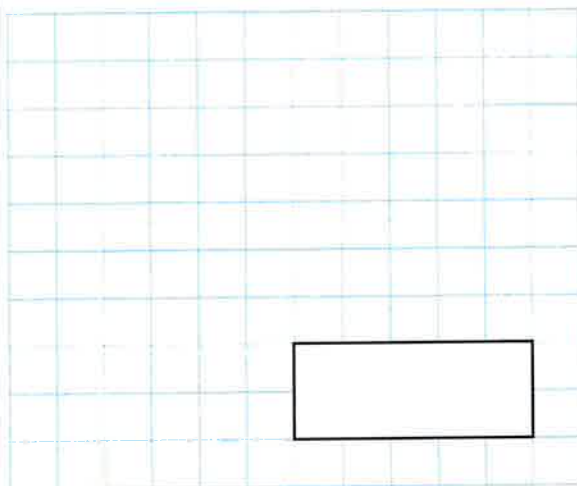
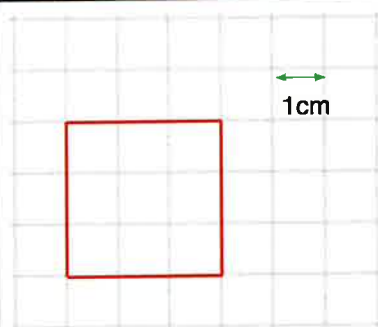
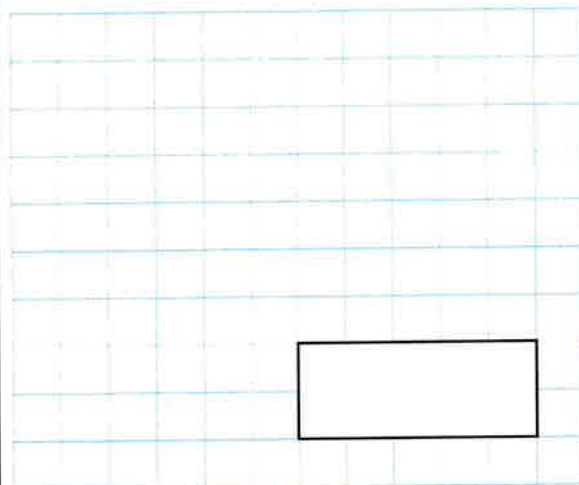
Write down the coordinates of point B

Fill in the missing numbers

$$\begin{array}{r} 4 \square 4 \\ + \square 4 \square \\ \hline 8 0 0 \end{array}$$



7th July

 $\frac{1}{3}$ of 27 $121 \div 11$ 

Write down the area of the square

Here is part of a number sequence.
The numbers in the sequence increase by 40 each time.

40 80 120 160 ...

Circle **all** of the number below that will appear in the sequence

195 210 240 250

300 320 390 400

Super Bowl LIV will take place in 2020

Write LIV in **figures**

Name: _____

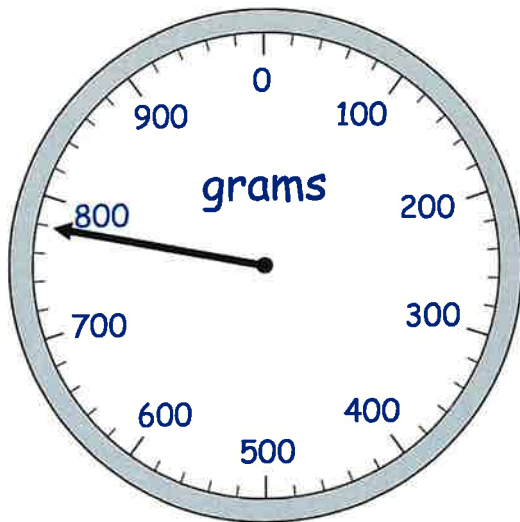


8th July

8×12

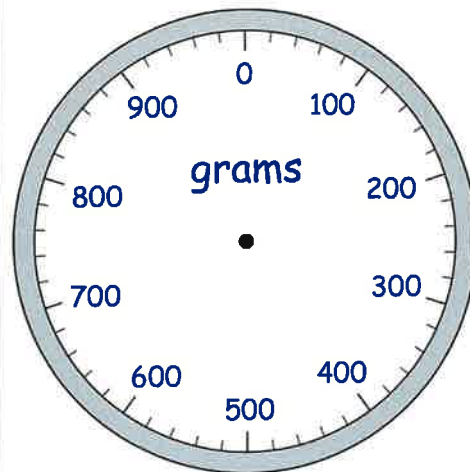
$548 + 381$

Steven places some oranges on a weighing scale.



He takes away one orange. The mass goes down by 160 grams.

Draw the pointer in its new position



Tom and Emma each buy a toy.

Tom pays with a £5 note and gets £1.35 change.

Emma's toy cost £6

How much more does Emma's toy cost than Tom's toy?



9th July

$$15 \times 4 \times 3$$

$$7.8 + 1.9$$

Three classes at a primary school collected some money.

The chart shows how much money the boys and girls collected.



In Class 1, how much more money did the girls collect than the boys?

How much money did the boys collect altogether in classes 1, 2 and 3?

The numbers in this sequence increase by 30 each time.

70 100 130 160 ...

Which number in the sequence is **closest to 350**?